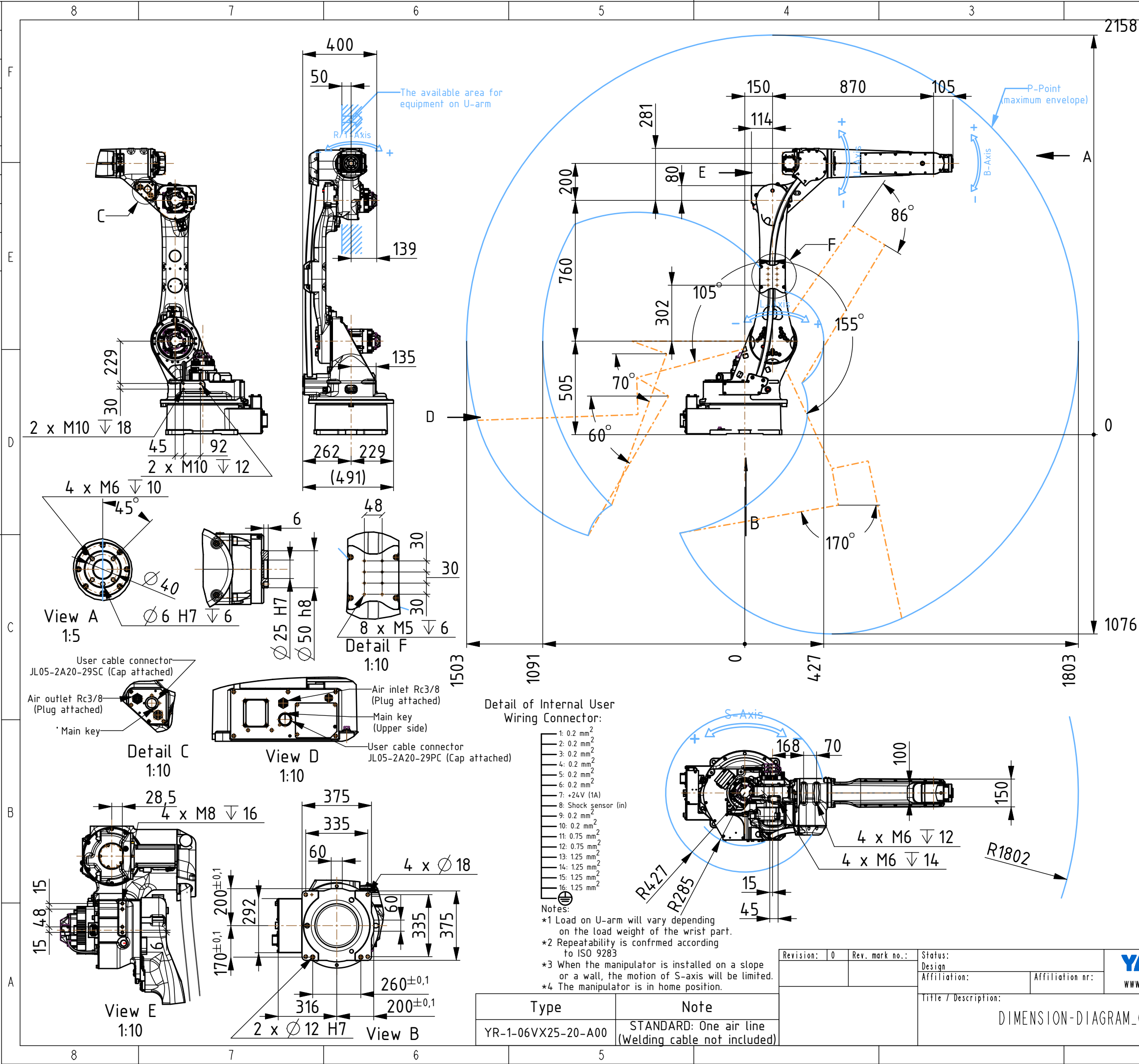


[illegible]

The reproduction, distribution and utilization of this document as well as the communication of its contents to others without express authorization is prohibited. Offenders will be held liable for the payment of damages. All rights reserved in the event of the grant of a patent, utility model or design.



MOTOMAN-GP20		
Configuration		Articulated Robot
Degree of Freedom		6
Payload	Wrist	20 kg
	On U-arm (*1)	12 kg
Repeatability (*2)		0.02 mm
Range of Motion	S-Axis	-180° ~ +180°
	L-Axis	-105° ~ +155°
	U-Axis	-86° ~ +160°
	R-Axis	-200° ~ +200°
	B-Axis	-140° ~ +140°
	T-Axis	-455° ~ +455°
Max Speed	S-Axis	3.67 rad/s, 210°/s
	L-Axis	3.67 rad/s, 210°/s
	U-Axis	4.63 rad/s, 265°/s
	R-Axis	7.33 rad/s, 420°/s
	B-Axis	7.33 rad/s, 420°/s
	T-Axis	12.57 rad/s, 720°/s
Allowable Moment	R-Axis	44 Nm, 4.5 kgf m
	B-Axis	44 Nm, 4.5 kgf m
	T-Axis	24.5 Nm, 2.5 kgf m
Allowable Inertia (GD ² /4)	R-Axis	2.3 kg m ²
	B-Axis	2.3 kg m ²
	T-Axis	1.2 kg m ²
Approx. Robot mass		250 kg
Protected structure		Body: IP54, Wrist: IP67
Mounting method (*3)		Floor, Wall, Tilt, Ceiling
	Temperature	0~45°C
	Humidity	20%RH~80%RH (Non-condensing)
	Vibration	4.9 m/s ² (0.5G) or less
	Altitude	1000 m or less
	Flatness for instalation	0.5 mm or less
	Others	- Free from dirt, dust, oil soot or water. - Free from explosive and corrosive gas or liquid. - Free from electrical noise. - Free from strong magnetic fields.
Power Requirements		2.0 kVA
Controller		YRC1000

Units: mm

Revision:	0	Rev. mark no.:	Status:		<div>YASKAWA</div> <div>www.yaskawa.eu.com</div>	Dimension:		Weight [kg]:	
			Design			Created:	08.04.2021	Jezersek D.	251,903
			Affiliation:	Affiliation nr:		Drawn:			Sheet:
			Title / Description:			Approved:	25.Oct.2021	A.Ichibangase	A3
			DIMENSION-DIAGRAM_GP20			Drawing-nr.:	YI100004		Scale: 1:20
									Sheet: 1 / 1