

## TR-1000 7G

One-station tilt-rotate positioner

### Key features

- High payload
- Large working range
- Compact, flexible and cost efficient
- Hollow shaft drive for media feed through



The TR-1000 7G positioner provides one tilting and one rotational axis. Despite the compact design, it is one of the most powerful positioners among YASKAWA portfolio.

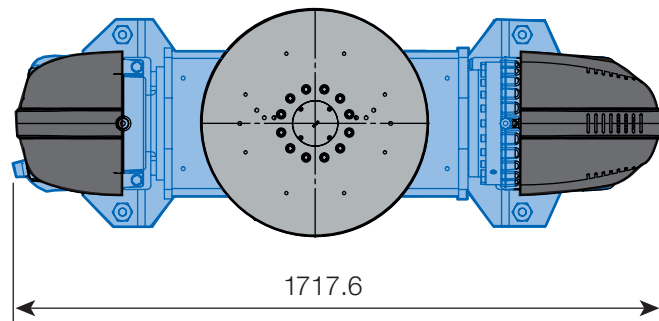
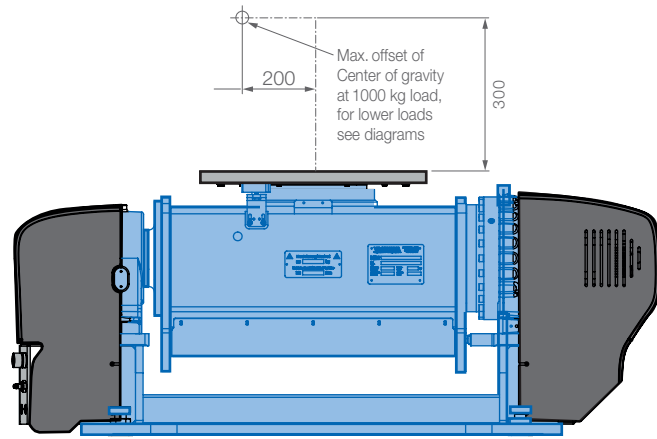
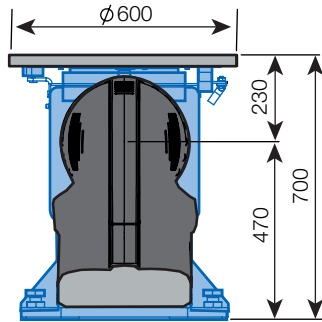
This positioner can handle jigs and work pieces up to a weight of 1000 kg and a maximum diameter of 1200 mm. The centre of gravity of the jig can be up to 300 mm above the faceplate. This allows great flexibility in design of the jig.

The hollow shaft drive of the faceplate allows to feed different media through to the jig. Media feed through can be realized as endless turning solution. For welding applications two connectors for welding current (each max. 360A) are available.

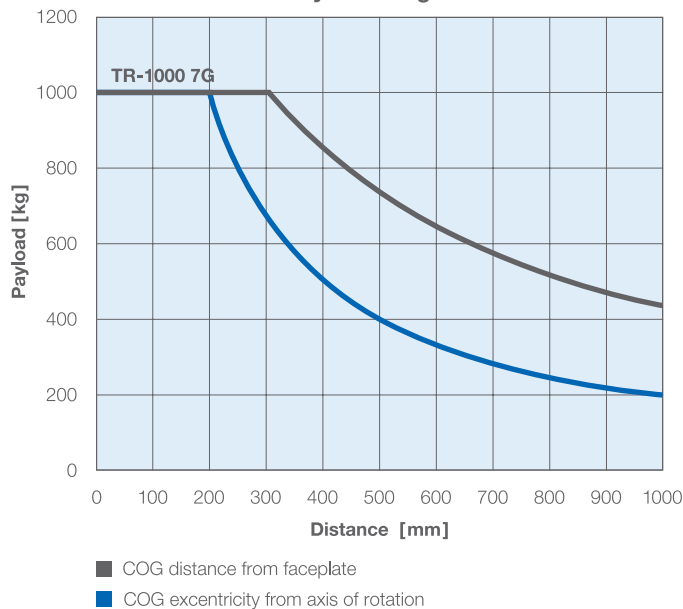
New generation  
**Sigma-7**

Controlled by  
**YRC1000**

# TR-1000 7G



Payload diagram



COG = Center of Gravity

## Technical data

Rated load [kg]	1000
Diameter of load [mm]	1200*
Max. tilt speed [RPM]	12
Max. rotation speed [RPM]	20
Tilt-angle [°]	± 90*
Max. distance COG to faceplate at 1000 kg [mm]	300
Max. distance COG to rotation axis of faceplate at 1000 kg [mm]	200
Rated load inertia tilt-axis [kg · m <sup>2</sup> ]	2500
Rated load inertia rotation-axis [kg · m <sup>2</sup> ]	700**
Rated holding torque tilt-axis [Nm]	5250
Through hole rotation-axis [mm]	85
Rated weld current [amps a 100% duty]	2 x 360***

\* For diameters of load greater than Ø 900 mm and necessary tilt of 90°, use additional socket for the positioner in order to avoid collision of the work piece with a base plate or floor.

\*\* At no COG eccentricity

\*\*\* 1 x 360 is standard

# YASKAWA

© YASKAWA Europe GmbH · RegNo. 1092EN-01, January 2024  
 Technical data may be subject to change without previous notice.  
 Please request detailed drawings at: [robotics@yaskawa.eu](mailto:robotics@yaskawa.eu)

YASKAWA Europe GmbH  
 Robotics Division  
 Yaskawastraße 1  
 85391 Allershausen

Tel. +49 (0) 8166 90-0  
[robotics@yaskawa.eu](mailto:robotics@yaskawa.eu)  
[www.yaskawa.eu](http://www.yaskawa.eu)